

Document Scan Server

Paper documents can enter your organization through headquarters, a branch office, or even the warehouse. Even more important than the paper are the business processes driven by the information it contains. The sooner you capture that information, the better your business performs. So how do you capture all of that valuable information in a timely manner? You collect it where it originates and get it into the business systems used to run your organization.

Capturing documents at the point of entry into a workflow – often referred to as distributed capture – is powerful. But what kind of technology will allow you to do this in a way that adapts to your existing business processes yet still fits in seamlessly with your existing IT environment? The answer is Document Scan Server.

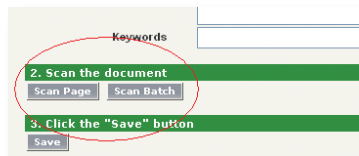
Kofax's Document Scan Server makes deploying distributed capture simple. No software to install in remote locations and centralized management of the system means deployment and ongoing maintenance is a snap. And with flexible tools to "scan-enable" third-party software applications, Document Scan Server allows you to incorporate document capture into existing business processes with the same software that you use today.



What is a Document Scan Server?

The Document Scan Server is an integrated hardware/software solution that offers tools to scan-enable core business applications and gives users the ability to drive a document scanner from a scan-enabled application. It consists of three main parts:

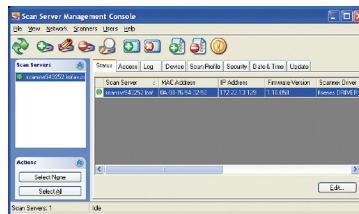
- **Web Services Software Development Kit** (SDK) that allows a developer or integrator to add a scanning component to a new or existing software application
- **Embedded hardware appliance** that connects your scanner and your document capture infrastructure to the network
- **Management Console** that offers the ability to remotely access the functionality of the Document Scan Server appliance for network discovery, configuration, and management



The Web Services SDK offers tools to scan-enable new or existing software applications.



The embedded hardware appliance offers easy yet secure scanner and network connectivity.



The centralized Management Console facilitates deployment and ongoing management.

Scan Documents From Virtually Any Application

Document Scan Server – Adapting to Existing Processes and Environments

Scan-enabled Applications that are Tailored to a Business Need

The Document Scan Server Web Services SDK gives developers and integrators the ability to essentially add a “scan” button and scanning functionality to a software application. Through the use of Web services, organizations can now add scanning to a Service Oriented Architecture (SOA). What’s more, this methodology reduces the complexity and development time and resources that typically come with developing a scan application that is crafted to meet a specific business need. Plus, this tight integration of scanning and a core business application allows for efficient business processes and improved access to information.

Scanner Connectivity that Doesn't Compromise Security

The Document Scan Server solution includes an embedded hardware appliance with a USB port for scanner connectivity and an Ethernet port that connects your scanning infrastructure to the network. This hardware-based approach makes the scanner a network attached device and is a secure alternative to the way scanners are deployed today. Here’s why: Administrator rights are not required on the client PC (to install drivers or document capture applications) and access to USB ports on the client PC (often considered a security risk) is not needed either.

Centralized Management to Ease Deployment and Facilitate Management

Document Scan Server offers centralized management capabilities for network discovery, configuration, and ongoing management. With the Management Console administrators can configure multiple Document Scan Server devices and can push out firmware updates and new drivers to keep them up to date. The Management Console also can access user statistics and logs to proactively manage capture hardware.

True, Thin Client Scanning

No code whatsoever (not even applets or ActiveX controls) is installed on the client PC. This means that a document scanner now can be driven from a true, browser-based application. Plus, the scanner is accessible from Windows, Mac, and Linux clients, thin client terminals, and in Citrix environments. Document Scan Server can play in virtually any IT environment with no change to the existing PC configuration.

Simplified Connectivity and User Set Up

After the Document Scan Server is configured and sent to the location where it will be deployed, it only takes a few connections to get up and running. Back at the central site, administrators set up user accounts, user privileges, and configure settings removing complexity for end users and allowing for consistent, error-free scans.

Integration With Kofax's Industry Leading Ascent Capture Solution

Document Scan Server complements centralized document capture technology like Kofax's Ascent Capture. Even when deployed in a distributed environment, Document Scan Server can connect to Ascent Capture through the Ascent Collection Server. This seamless connectivity allows users to leverage Ascent's advanced capabilities and workflow. And it allows you to use additional Kofax solutions to build a decentralized capture system designed to address your business requirements.

For More Information

To learn more about Document Scan Server please visit: www.kofax.com. Or give us a call for further assistance!

Scan
Documents
From Virtually
Any
Application

16245 Laguna Canyon Rd.
Irvine, CA 92618-3603 U.S.A.
Phone: 949-727-1733
Fax: 949-727-3144
E-mail: info@kofax.com
www.kofax.com

Koning Albert 1 Laan 64-66
B-1780 Wemmel, Belgium
Tel: +32 (0) 2 456 17 20
Fax: +32 (0) 2 456 17 21



KOFAX[®]
A DICOM GROUP COMPANY