

# WideTEK® 25

EMAIL [sales@Image-1.com](mailto:sales@Image-1.com) for QUOTE!



- SCANS 18.5 x 25 INCHES, 19% MORE THAN DIN/ISO A2
- TRUE SCAN TECHNOLOGY, NOT A DIGICAM SUBSTITUTE
- FULL SCAN IN LESS THAN 3 SECONDS
- CAPTURES 3D SURFACES, TEXTURES OF VARIOUS MATERIALS, BRAILLE PRINT
- DUAL LED ILLUMINATION, WITH NEW DIFFUSORS FOR BEST RESULTS
- 1200 x 1200 DPI SCANNER RESOLUTION
- INTEGRATED 64BIT LINUX, INTEL I3 QUAD CORE, 8 GB RAM, 320GB HDD
- GIGABIT TCP/IP NETWORK INTERFACE
- SUPPORTS SRGB, ADOBE RGB, NATIVE COLOR SPACES
- SMALL ENOUGH TO FIT ON ANY DESKTOP
- LARGE WVGA COLOR TOUCHSCREEN FOR SIMPLIFIED OPERATION
- INTEGRATED WALK UP SCANNING SOFTWARE
- TWO USB PORTS FOR WALK UP SCANNING
- AUTOMATIC CROP AND DESKEW
- REAL TIME DISPLAY OF SCANNED IMAGES
- VIRTUAL RESCAN, MODIFY IMAGES WITHOUT RESCANNING
- EASY INSTALLATION VIA SCAN2NET® TECHNOLOGY

**WideTEK® 25, the only wide format flatbed scanner which also captures 3D surfaces in a quality suitable for inspection and quality control but compact enough for your desktop.**

**Professional quality, widest color gamut in the industry!**

#### **WideTEK® 25 Applications:**

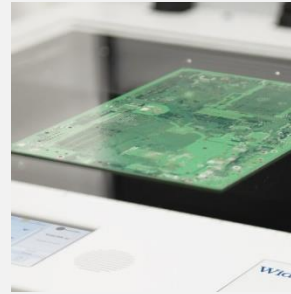
- Scan maps, color posters, display graphics, artwork, photos
- Archiving newspapers, periodicals, catalogs and magazines
- Scanning advertising on paper board, photos, fabrics, tiles
- Bound & stapled documents: contracts, accounting ledgers
- Surface inspection, print output control, Braille control
- Capture 3D textures of fabrics, tiles, stone, flooring, etc.

***NEW! Large Format Flatbed Scanner***  
***Complete ScanStation Solution***  
***Scan to Network, USB, Tablet, Phone or Device***  
***No PC Required!*** (Apple iOS and Android Compatible)

## Walk up scanning, LED illumination, 3D capture

WideTEK® 25 is extremely fast and delivers high resolution color, black and white or grayscale images in jpeg, tiff, pdf and most other standard image output formats. It combines production-ready design and uniquely compact dimensions in a new class of professional but affordable scanners.

WideTEK® 25 can scan nearly anything: from magazines, newspapers, maps, construction drawings, bound documents and more. Its most unique feature is the capability to capture 3D surfaces for industrial quality control and surface inspection applications. From Braille print on medication boxes to SMD parts on electronic boards, the superior image quality of the WideTEK 25 captures every detail.



Industrial quality control of printed circuit boards.

2D scan versus 3D scan, capture all details

## TECHNICAL DATA

EMAIL [sales@Image-1.com](mailto:sales@Image-1.com) for QUOTE!

Maximum Document Size	635 x 470 mm (25 x 18.5 inch), 19% more than DIN/ISO A2
Scanner Resolution / Optical Resolution	1200 x 1200 dpi (optionally 9600 x 9600 dpi interpolated) / 1200 x 600 dpi
Scan Speed Color	Maximum format @ 300 dpi < 3 s Maximum format @ 600 dpi < 6 s
Scan Speed Color 3D	Maximum format @ 300 dpi < 6 s
Color Depth	36 bit color, 12 bit grayscale
Scan Output	24 bit color, 8 bit grayscale, bitonal, enhanced halftone
File Formats	PDF, PDF/A, JPEG, PNM, TIFF uncompressed, TIFF G4 (CCITT), Multipage PDF, TIFF
Scan Modes	Plain with diffused illumination, 3D with visible surface texture, any combination of the two
Camera	2x Tri-Color CCD camera, 45,000 pixels, encapsulated and dust-proof
Light Source	Dual LED lamps with natural light diffusor
Lamp Life Time	50,000 h (typ.)
Computer	64 bit Linux, Intel quad core processor, 8 Gigabyte RAM, 320GB HDD for extra large jobs
Interface	1 GBit Fast Ethernet with TCP/IP based Scan2Net® Interface
Dimensions	222 x 760 x 795 mm (8.8 x 30 x 31.3 inch) (H x W x D)
Weight	45 kg / 100lbs.
Electrical Connection	100 – 240 V AC, 47 – 63 Hz (external power supply, complies with ECO standard CEC level V)
Power Consumption	≤ 0.5 W (Sleep) / 4.8W (Standby) / 55 W (Scanning)
Operating Temperature	5 to 40 °C, 40 to 105 °F
Relative Humidity	20 to 80 % (non-condensing)
Noise	≤ 40 dB(A) (Scanning) / ≤ 25dB(A) (Standby)
Approvals	ANSI/UL 60950-1, CAN/CSA C22.2 No. 60950-1; IEC 60950-1; GB4943.1-2011, GB9254-2008, GB17625.1-2012; IS 13252-1:2010; EN 55022, EN 55024; FCC 47 Part 15



WEEE RoHS



6202 Benjamin, Rd. Suite 103  
Tampa, FL 33634

(800) 956-9000

[sales@Image-1.com](mailto:sales@Image-1.com)